

magicolor® 2300 DeskLaser

Small
footprint,
big
performance

Compact, affordable color laser printer for
Windows environments 4 ppm color / 16 ppm
monochrome 2400 dpi resolution Standard
10/100BaseTX Ethernet®, USB, and parallel
interfaces

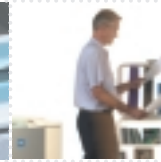
MINOLTA
QMS

The essentials of imaging

www.minolta-qms.com



magicolor® 2300 DeskLaser



Size matters

The magicolor 2300 DL is a colour laser printer which delivers the performance you need, in a neat package that takes up less space on your desktop than many inkjet printers.

The magicolor 2300 prints 4 full colour pages per minute or 16 black and white pages per minute with impressive 2400 x 600 dpi laser quality. Although the magicolor 2300 DL is small enough to be used as a personal colour laser printer, it also comes with a standard network connection and a maximum duty cycle of 35,000 pages per month making it suitable to be shared amongst small workgroups.

Ready for a Workout

- With a low purchase price combined with the speed, quality and low cost per page which laser printing offers, the magicolor 2300 DeskLaser is a great choice for small workgroups and personal business users who want to add more colour to their work.

Print speed

Color: up to 4 ppm
B&W: up to 16 ppm

Compatibility

Windows 95/98/Me/NT 4.0/2000/XP

Interfaces

Ethernet (10/100BaseTX), USB,
IEEE 1284 parallel

Paper size and input

Up to legal (8.5" x 14") 200-sheet
multipurpose tray

basics



Size





options

● Exercise Your Options

The magicolor 2300 DL also has low cost options to increase the printer's paper capacity and allow automatic double sided printing. Details of these and service and consumables can be found at www.minolta-qms.nl/configurator with current list pricing.

Polymerized toner

The magicolor 2300 DL uses polymer toner to give the best print quality. The new technology used to make polymer toner allows greater control over the particle size of the toner, better control over colour and a cleaner printing process. This results in better quality prints and a more reliable printer.

Document handling

Automatic duplexer for two-sided printing

Memory

Upgradeable to 288 MB

Paper input

500-sheet lower input feeder



matters

MINOLTA
QMS

The essentials of imaging

www.minolta-qms.com



magicolor® 2300 DeskLaser



Technical Data

Printing Process

Print Method: electrophotographic laser
Print Speed:
Color: up to 4 ppm
Monochrome: up to 16 ppm
Resolution: 2400 x 600 dpi, 1200 x 600 dpi, 600 x 600 dpi
Recommended Duty Cycle: Up to 35,000 prints/month (25/75 mix of color and monochrome)

Hardware and Software Capabilities

Processor Type: PowerPC® 405 core, 200 MHz
Memory: 32 MB SDRAM on board, upgradeable to 288 MB (one slot)
Operating System Compatibility: Windows 95/98/Me, NT 4.0, 2000, XP
Printer Management: PageScope Lite Web-based printer monitoring
Color Support: Enhanced Automatic Image Density Control (eAIDC), Automatic ICC-based color matching, ICC device profiles

Host System Requirements

Minimum: 233 MHz or higher Pentium® -class PC with 36 MB free disk space and RAM as specified: 32 MB (95/98/Me/NT), 64 MB (2000), 128 MB (XP)
Optimum: 300 MHz or higher Pentium II-class PC with 500 MB free disk space and 128 MB RAM

Interface Support

Standard Interfaces: Ethernet (10/100BaseTX) supports TCP/IP; USB 1.1; IEEE 1284 parallel (supports Microsoft® 'Plug and Play')

Paper Handling

Standard Paper Input: 200-sheet multipurpose tray
Optional Paper Input: 500-sheet lower input feeder
Standard Paper Output: 200-sheet face-down output tray
Duplex Printing: manual (automatic optional)
Paper Sizes Supported:
Multipurpose Tray: Letter, Legal, A4, Executive, Statement, Folio, Foolscap, UK Quatro, Govt. Legal, A5, B5 (JIS), B5 (ISO), Kai 16, Kai 32, Japanese postcard; Monarch, Com 10, DL, C6, C5, Chou 3, and Chou 4 envelopes; Custom sizes (W) 92 - 216 mm (3.62" - 8.5"), (L) 148 - 356 mm (5.83" - 14")
Lower Input Feeder: A4 (plain paper only)
Duplexer: Letter, Legal, A4
Printable Area: 4 mm (16") from all edges; maximum 342 mm (13.46") guaranteed print length
Paper Weights:
Plain paper: 60 - 90 g/m² (16 - 24 lb. Bond)
Thick stock: 90 - 163 g/m² (24 - 90 lb.)
Print Media: Plain paper, thick stock, OHP transparencies, laser-quality labels, and envelopes. Duplexing on plain paper only.

Model Specific Features

Features	magicolor 2300 DL
Print Speed - Monochrome	up to 16 ppm
Print Speed - Color	up to 4 ppm
Resolution	up to 2400 dpi
Memory	32 MB (max. 288 MB)
10BaseT/100BaseTX Ethernet	•
USB	•
200-Sheet Multipurpose Tray	•
500-Sheet Input Feeder	*
Automatic Duplexing	*

• Standard *Optional

MINOLTA-QMS Corporate Office
MINOLTA-QMS, Inc.
(USA, Canada, Latin America)
Tel: +1 (251) 633 4300
Fax: +1 (251) 639 4490

MINOLTA-QMS Asia
Tel: (+61) 2 - 9884 9966
Fax: (+61) 2 - 9885 9977

MINOLTA-QMS Australia
Tel: (+61) 2 - 9884 9966
Fax: (+61) 2 - 9884 9977

MINOLTA-QMS The Netherlands
Tel: (+31) 30 - 248 1200
Fax: (+31) 30 - 248 1211

MINOLTA-QMS Belux
(Belgium, Luxembourg)
Tel: (+32) 2 - 479 64 23
Fax: (+32) 2 - 479 97 42

MINOLTA-QMS Denmark
Tel: (+45) 72 - 21 21 21
Fax: (+45) 72 - 21 21 22

MINOLTA-QMS France
Tel: (+33) 01-41-07-93-93
Fax: (+33) 01-40-83-01-10

MINOLTA-QMS GmbH
(Germany, Austria)
Tel: (+49) 89/63 02 67-0
Fax: (+49) 89/63 02 67-67

MINOLTA-QMS Switzerland
Tel: (+41) 1/740 96 40
Fax: (+41) 1/740 94 70

MINOLTA Spain,S.A.
Tel: (+34) 91 327 73 00
Fax: (+34) 91 327 09 00

MINOLTA Italia S.p.A.
Tel: (+39) 02 39 011 1
Fax: (+39) 02 39 011 219

MINOLTA Norway AS.
Tel: (+47) 2 27 89 800
Fax: (+47) 2 27 89 850

Renatus OY (Finland)
Tel: (+358) 9 4 20 61
Fax: (+358) 9 4 20 62 00

MINOLTA Portugal Lda.
Tel: (+351) 217 81 47 00
Fax: (+351) 217 81 47 91

MINOLTA-QMS Sweden
Tel: (+46) 8 - 627 7500
Fax: (+46) 8 - 627 7607

MINOLTA-QMS South Africa
Tel: (+27) 011 - 249 4000
Fax: (+27) 011 - 249 4039

MINOLTA-QMS Middle East
Tel: (+97) 1 4 335 2574
Fax: (+97) 1 4 335 2573

MINOLTA-QMS UK
(UK, Ireland)
Tel: (+44) 1784 - 442255
Fax: (+44) 1784 - 461641

For all other countries:
MINOLTA-QMS Europe,
Middle East, Africa
Tel: (+31) 30 - 248 1200
Fax: (+31) 30 - 248 1211

Websites:
www.minolta-qms.com

Extended Warranty	magicolor 2300 DL
1 year swap warranty	1760440-001
1 year on-site warranty	1760440-002
Enhanced on-site service	1760440-003

©2002 MINOLTA-QMS, Inc. All rights reserved. Specifications are subject to change without notice. The MINOLTA-QMS logo and magicolor are trademarks or registered trademarks of MINOLTA-QMS, Inc. All other trademarks or registered trademarks are the property of their respective owners. Images provided by kind courtesy of digitalvisiononline.com. 05/02 * The addition of some options, in some combinations may cause the product to become non-compliant. Energy Star compliance does not represent an EPA endorsement of any product or service.

partnumber: 1730895-001



The essentials of imaging

www.minolta-qms.com